

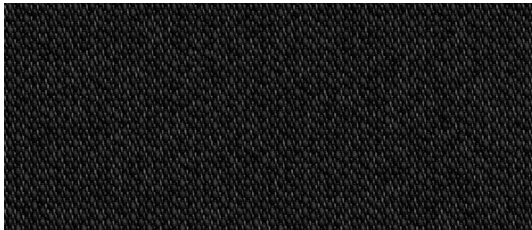
TWILIGHT COMFORT



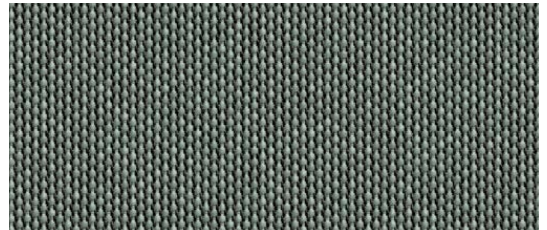

TWILIGHT
COMFORT

262

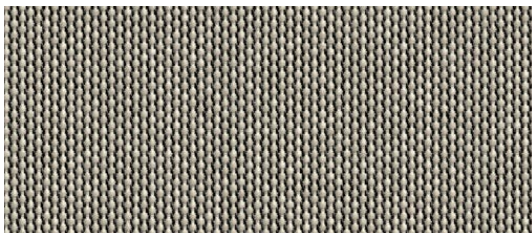
TWILIGHT COMFORT



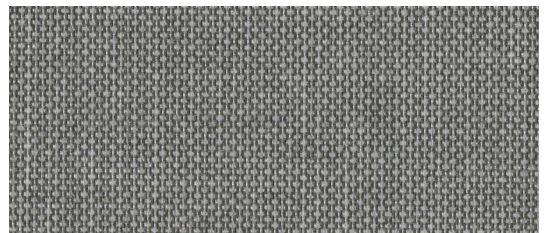
262 154 BLACK



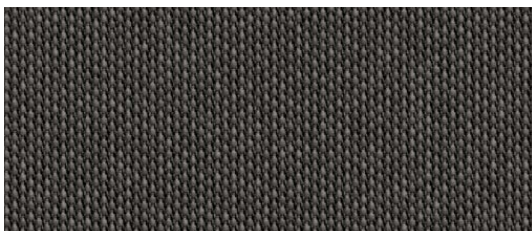
262 621 CEMENT



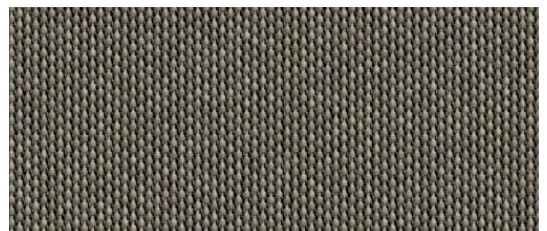
262 721 PLATINUM



262 802 SMOKE



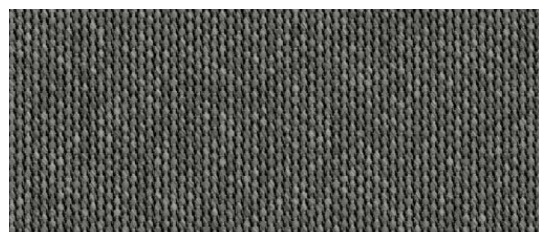
262 815 SLATE



262 810 TAUPE



262 830 STEEL



262 814 GRAPHITE

| Strahlungsphysikalische Parameter und Leistungsbeurteilung nach / Physical radiation parameter and performance appraisal to / Paramètres physiques de rayonnement et évaluation de la performance selon / Fysieke stralingsparameter en prestatiebeoordeling om / Parametri fisico-chimici d'irradiazione valutazione della prestazione secondo la norma DIN EN 14501 | T_v % | T_s % | R_s % | A_s % | G_{tot} | OF % |
|--|---------|---------|---------|---------|-----------|------|
| 262 154 BLACK | 4,5 | 4,60 | 2,60 | 92,80 | 0,07 | 4 |
| 262 621 CEMENT | 9,2 | 13,70 | 23,20 | 63,10 | 0,12 | |
| 262 721 PLATINUM | 11,0 | 13,00 | 25,10 | 61,90 | 0,12 | |
| 262 802 SMOKE | 12,2 | 12,60 | 16,90 | 70,50 | 0,11 | |
| 262 810 TAUPE | 6,3 | 10,70 | 22,80 | 66,50 | 0,10 | |
| 262 814 GRAPHITE | 8,6 | 8,80 | 10,20 | 81,00 | 0,09 | |
| 262 815 SLATE | 7,0 | 7,60 | 9,70 | 82,70 | 0,09 | |
| 262 830 STEEL | 6,6 | 7,20 | 14,70 | 78,10 | 0,08 | |

T_v Lichttransmissionsgrad / Light transmission degree / Degré de transmission de lumière visible / Lichttransmissie graad / Grado di trasmissione della luce visibile

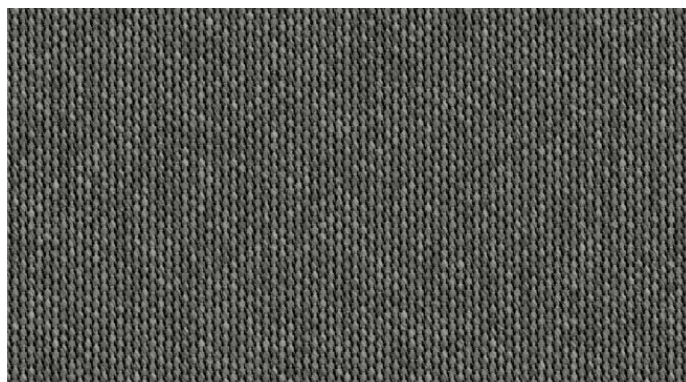
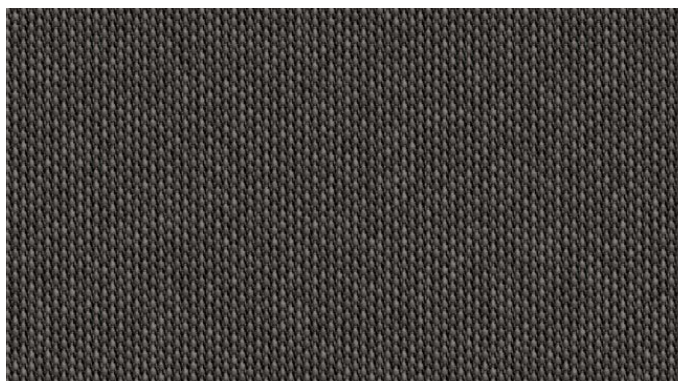
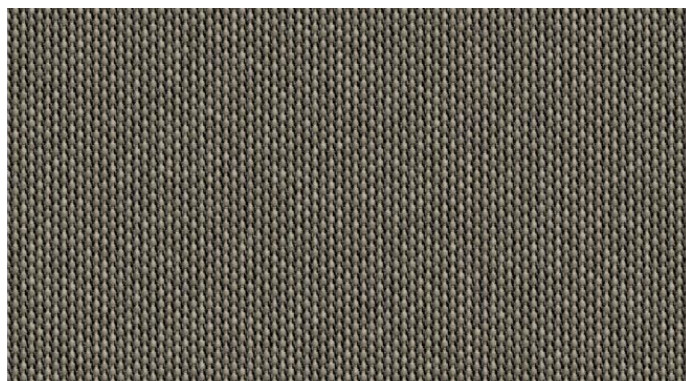
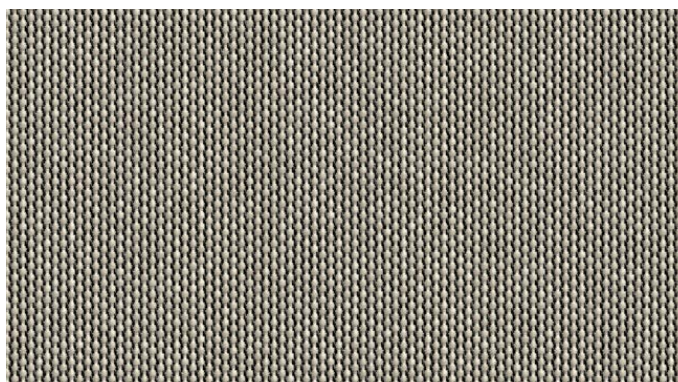
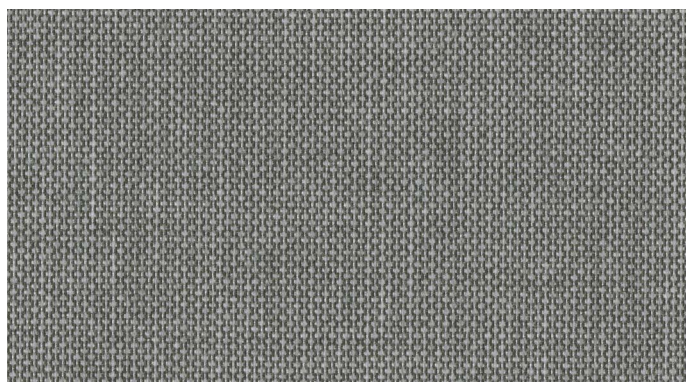
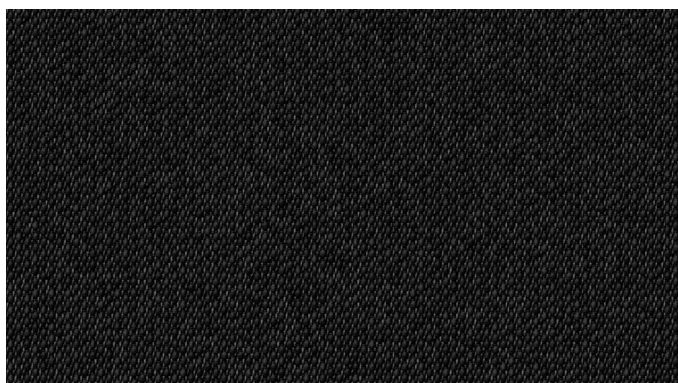
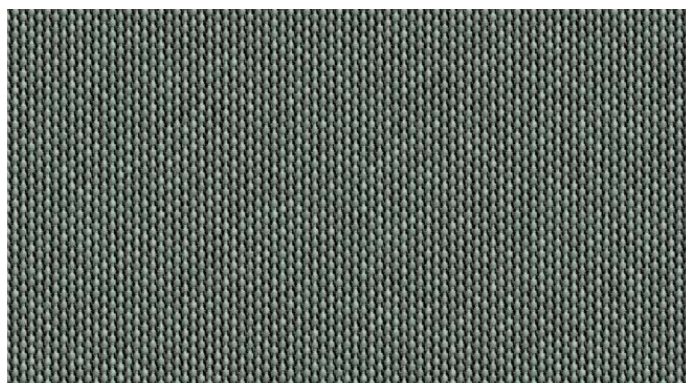
T_s Strahlungstransmissionsgrad / Solar transmittance / Degré de transmission des rayons / Zonnetransmissie / Grado di trasmissione raggi

R_s Strahlungsreflexionsgrad / Solar reflectance / Degré de réflexion des rayons / Zonereflectie / Grado di riflessione della radiazione

A_s Strahlungsabsorptionsgrad / Solar absorptance / Degré d'absorption des rayons / Zonneabsorptie / Grado di assorbimento della radiazione

G_{tot} Gesamtenergiedurchlassgrad / Total energy transmittance / Transmission d'énergie totale / Totale energiedoorgang / Trasmissione di energia totale (DIN EN ISO 52022-3)

OF Openness faktor





FACTS

262 TWILIGHT COMFORT



REINIGUNG & PFLEGE

Cleaning & Care
Nettoyage & Entretien
Reinigung & Verzorging
Pulizia & Cura




ZEICHENERKLÄRUNG

Explanation of symbols
Explication des symboles
Verklaring van symbolen
Spiegazione dei simboli

Anwendungen / Applications / Applications /
Toepassingen / Applicazione



| | | |
|---|--|--------------------|
|  | Special fabric construction PAN/PES | DIN 60 001 |
|  | 235 g/m² | DIN EN 12127 |
|  | Note: 90 | EN ISO 4920 |
|  | 160 daN / 5 cm | DIN EN ISO 13934-1 |
|  | 70 daN / 5 cm | DIN EN ISO 13934-1 |
|  | min. 7/8 | DIN EN ISO 105-B04 |
|  | 300 cm | |
|  | min. 7 | DIN EN ISO 105-B02 |

Hinweis: Änderungen die dem technischen Fortschritt dienen, behalten wir uns vor. Werte ohne Toleranzangaben sind Nennwerte mit einer Toleranz von ±5%. Die Angaben entsprechen unserem heutigen Kenntnisstand und sollen ohne Rechtsverbindlichkeit informieren. • Note: Subject to change in view of technical upgrades. Values indicated without tolerance levels are nominal values with a tolerance range of ±5%. All data presented here is given to the best of our current knowledge for guidance purposes and is not legally binding. • Remarque: Sous réserve de toute modification dans le cadre d' améliorations techniques. Les valeurs mentionnées sans tolérance sont des valeurs nominales avec une tolérance de ±5%. Les indications correspondent à notre savoir actuel et sont données à titre informatif sans obligation juridique. • Opmerking: wijzigingen voorbehouden in verband met technische upgrades. Waarden aangegeven zonder tolerantieniveaus zijn nominale waarden met een tolerantiebereik van ±5%. Alle gegevens die hier worden gepresenteerd, zijn naar ons beste huidige kennis gegeven voor begeleidingsdoeleinden en zijn niet juridisch bindend. • Avvertenza: Il produttore si riserva di apportare modifiche per il miglioramento tecnico del prodotto. I valori privi di tolleranza sono da intendersi come valori nominali con una tolleranza di ±5%. Tutti i dati corrispondono allo stato attuale delle nostre conoscenze; le informazioni fornite non sono legalmente vincolanti.

SPECIAL FEATURES



PVC frei / PVC-free / Sans PVC / PVC-vrij /
senza PVC



Durchsicht / Transparency / Transparence / Transparantie /
Trasparenza



Wasser- und schmutzabweisend / Water and dirt repellent /
Hydrofuge et anti-salissures / Water- en vuilafstotend /
Idrorepellente e antisporcio



Lichtbeständig / Fade resistant / Résistant à la décoloration /
Bestand tegen vervagen / Resistente allo sbiadimento



OEKO-TEX®
CONFIDENCE IN TEXTILES
STANDARD 100

